

CONTACT INFORMATION

BUILDING MANAGEMENT:
 The Swig Company
 220 Montgomery St.
 San Francisco, CA 94108
 contact: Agnes Wyman,
 Property Manager
 phone: (415) 291-1100

BUILDING CONTACT:
 The Mills Building
 220 Montgomery St.
 San Francisco, CA 94108
 contact: Cary Hedman,
 Chief Engineer
 phone: (415) 421-1444

ELEVATOR CONTRACTOR:
 KONE Inc.
 15021 Wicks Blvd.
 San Leandro, CA 94577
 contact: Jill Kirschenheuter
 phone: (510) 351-5141
 fax: (510) 351-5341
 e-mail: Jill.Kirschenheuter
 @kone.com

ABBREVIATIONS

ASSY. = ASSEMBLY
 B.O. = BY OTHERS OR OWNER
 C = STEEL CHANNEL
 CCR = CALIFORNIA CODE OF REGULATIONS
 CWT. = COUNTERWEIGHT
 D.B.G. = DIMENSION BETWEEN GUIDE RAILS
 E = EXISTING TO REMAIN
 GA. = GAUGE
 GFCI = GROUND FAULT CIRCUIT INTERRUPTER
 I.D. = INSIDE DIMENSION
 L = STEEL ANGLE
 LG. = LONG
 L.H. = LEFT HAND
 LNDG = LANDING(S)
 MC = MISC. STEEL CHANNEL
 N = NEW
 N.T.S. = NOT TO SCALE
 O.C. = ON CENTER
 O.D. = OUTSIDE DIMENSION
 OVHD. = OVERHEAD
 R = REMODEL/REFURBISH EXISTING
 REQ. = REQUIRED
 R.H. = RIGHT HAND
 T.B.C. = TO BE CONFIRMED
 T.B.D. = TO BE DETERMINED
 TYP. = TYPICAL
 T.O.S. = TOP OF STEEL
 TS = STEEL TUBE
 V.I.F. = VERIFY IN THE FIELD

The Mills Building

220 Montgomery Street

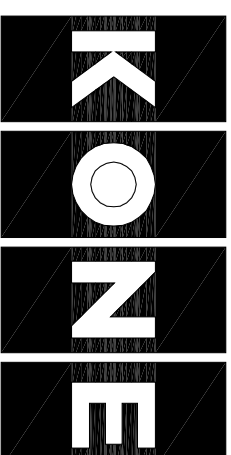
San Francisco, CA 94108

ELEVATOR ALTERATION

Submittal Layout Shop Drawings

**FINAL
 FOR FABRICATION
 & CONSTRUCTION**

KONE Inc.
 15021 Wicks Blvd.
 San Leandro, CA 94577
 Tel 510-351-5141



ELEVATOR NO. *3 **20579**
SUBMITTAL RECORD
PRELIMINARY. **10/21/03**
FINAL. **10/23/03**
RECORD SET.

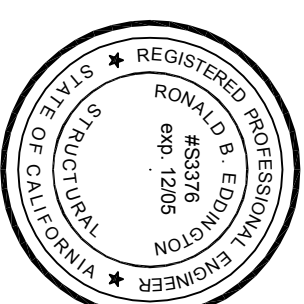
RGB ELEVATOR CONSULTING, LLC
 2117 BUSH ST., SAN FRANCISCO, CA 94115-3103
 (415) 771-4180 FAX: (415) 354-3454 RICH@BLASKA.COM

WORK BY OWNER / OTHERS

1. PROVIDE GUARDED & GROUNDED WALL-MOUNTED FLUORESCENT LIGHT FIXTURES AS SHOWN.
2. PROVIDE A SWITCH FOR LIGHTS AT THE STRIKE SIDE OF THE ENTRANCE.
3. PROVIDE A GROUND FAULT CIRCUIT INTERRUPT (GFCI) DUPLEX OUTLET.
4. PROVIDE AN APPROVED FIRE EXTINGUISHER LOCATED NEAR THE ENTRANCE.
5. PROVIDE A SELF-CLOSER ON THE ACCESS DOOR. DOOR SHALL BE SELF-LOCKING FROM THE EXTERIOR AND UNLOCKED FROM THE INTERIOR.

STRUCTURAL STAMP

**EDDINGTON
 ENGINEERING**



1116 SINGINGWOOD ROAD
 SACRAMENTO, CALIFORNIA 95864
 (916) 359-5300 FAX (916) 359-5301

DRAWN BY:	REV	DESCRIPTION:	DATE:	BY:
R. BLASKA				
RGB CONSULTING				
FRM: (415) 771-4180				
DRAW DATE: 10/23/03				
DIMENSIONS: N/A				

KONE Inc.
 15021 Wicks Blvd.
 San Leandro, CA 94577
 Tel 510-351-5141



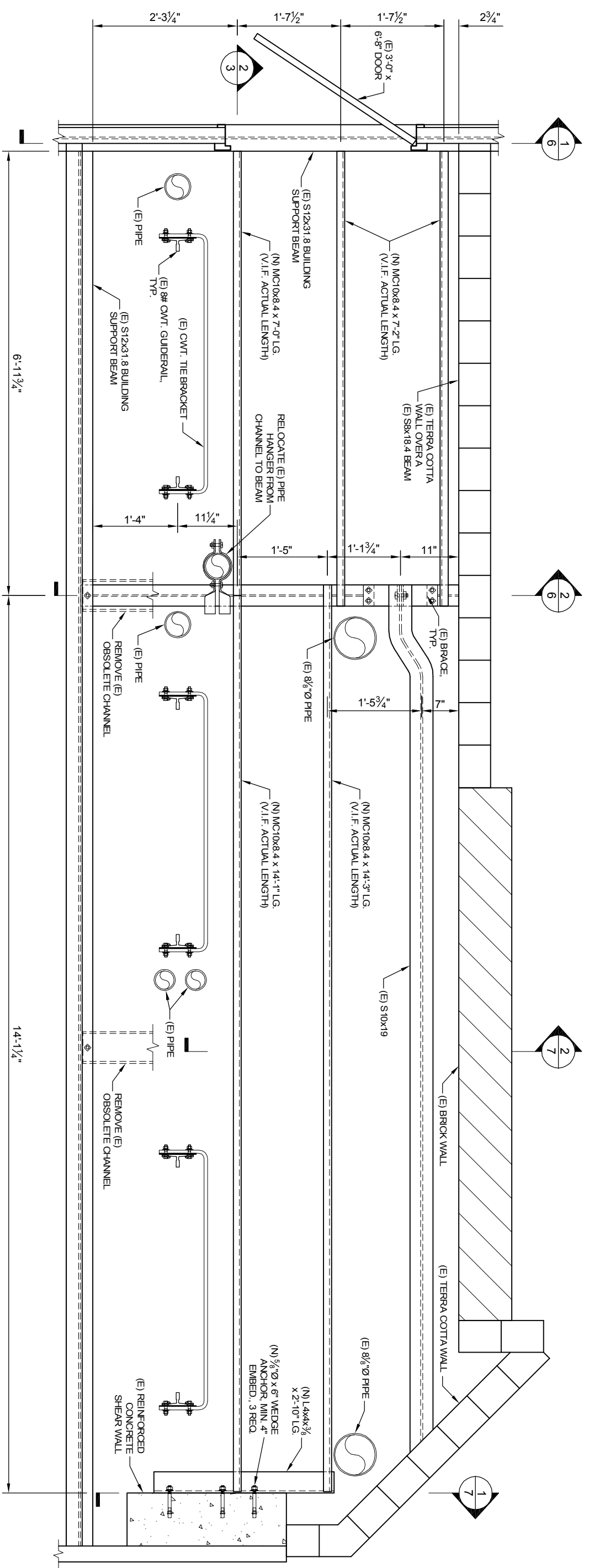
PROJECT: The Mills Building
 220 Montgomery Street
 San Francisco, CA 94108

BLDG. MGMT: The Swig Company

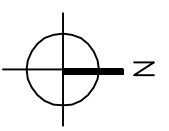
SCOPE: 2nd Landing Counterweight Access Catwalk

DWG.: TITLE SHEET, NOTES & ABBREVIATIONS

SCALE:	STATE NO.:	REV	DWG #	SHEET	OF
N/A	20579	-	1	1	7



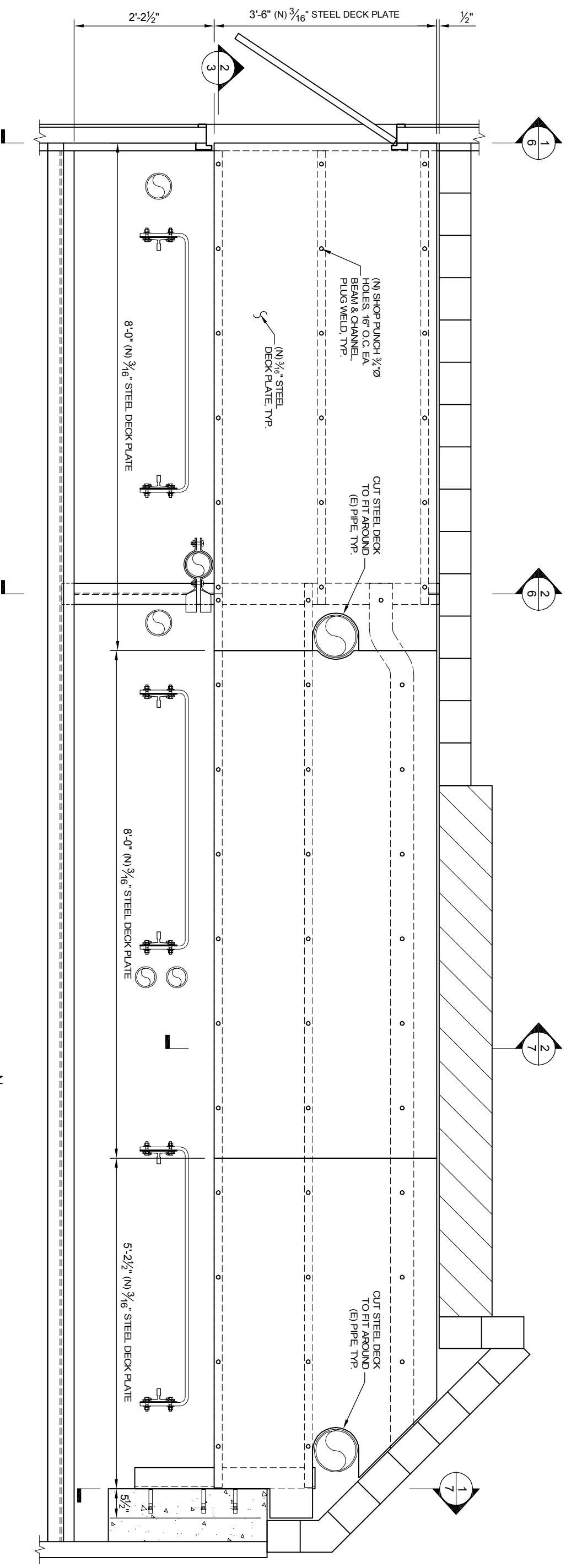
1 CATWALK BEAM PLAN VIEW
SCALE: 5/8" = 1'-0"



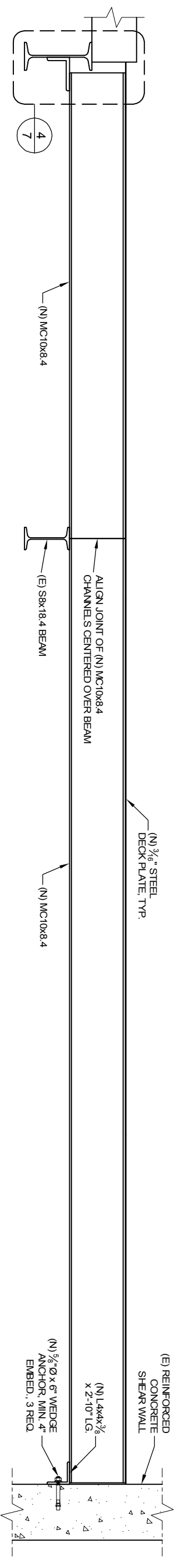
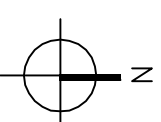
- GENERAL NOTES:**
1. SEE AMENDED PROPOSAL SPECIFICATIONS AND APPROVED CONTRACT DOCUMENTS, IN ADDITION TO THESE DRAWINGS, FOR COMPLETE SCOPE OF WORK.
 2. SOME DEVIATION IN FINAL LOCATIONS AND DIMENSIONS MAY BE REQUIRED AS NECESSITATED BY ACTUAL FIELD CONDITIONS. COMPLIANCE WITH ALL CODES REGARDING FIELD PLACEMENTS, LOCATIONS AND DIMENSIONS WILL BE FOLLOWED. DUE TO SURVEY ACCESSIBILITY DIFFICULTIES, ALL DIMENSIONS SHOWN SHOULD BE RECONFIRMED FOR ACCURACY IN THE FIELD.
 3. THIS EQUIPMENT, AS ALTERED BY THIS MODERNIZATION, IS DESIGNED ACCORDING TO THE REQUIREMENTS OF CCR TITLE 8 AND ASME A17.1, 1996 SAFETY CODE FOR ELEVATORS AND ALL STATE & LOCAL CODES.
 4. REMOVE ALL EXISTING, FLAMMABLE WOOD PLANK AND BEAM CATWALK MATERIALS. PRECAUTIONS SHALL BE TAKEN TO PREVENT OUTBREAK OF FIRE IN THE COURSE OF WORK.

**FINAL
FOR FABRICATION
& CONSTRUCTION**

STRUCTURAL STAMP EDDINGTON ENGINEERING		DRAWN BY: R. BLASKA FRM: RCB CONSULTING (415) 771-4180 DRAW DATE: 10/23/03 DIMENSIONS: FEET & INCHES	REV: . DESCRIPTION: . DATE: . BY: .
1116 SINGINGWOOD ROAD SACRAMENTO, CALIFORNIA 95864 (916) 359-5300 FAX (916) 359-5301		KONE Inc. 15021 Wicks Blvd. San Leandro, CA 94577 Tel 510-351-5141	
PROJECT: The Mills Building 220 Montgomery Street San Francisco, CA 94108		BLDG. MGMT: The Swig Company	
SCOPE: 2nd Landing Counterweight Access Catwalk		DWG.: CATWALK BEAM PLAN VIEW & GENERAL NOTES	
SCALE: AS NOTED		STATE NO.: 20579	



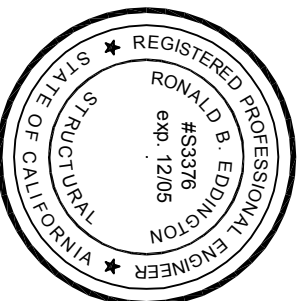
1 CATWALK DECK PLATE PLAN VIEW
SCALE: 5/8"=1'-0"



2 CATWALK ELEVATION
SCALE: 5/8"=1'-0"

FINAL
FOR FABRICATION
& CONSTRUCTION

STRUCTURAL STAMP
EDDINGTON
ENGINEERING
1116 SINGINGWOOD ROAD
SACRAMENTO, CALIFORNIA 95864
(916) 359-5300 FAX (916) 359-5301



REV	DESCRIPTION:	DATE:	BY:

DRAWN BY: R. BLASKA
FIRM: RGB CONSULTING
DRAW DATE: 10/23/03
DIMENSIONS: FEET & INCHES



PROJECT: The Mills Building
220 Montgomery Street
San Francisco, CA 94108

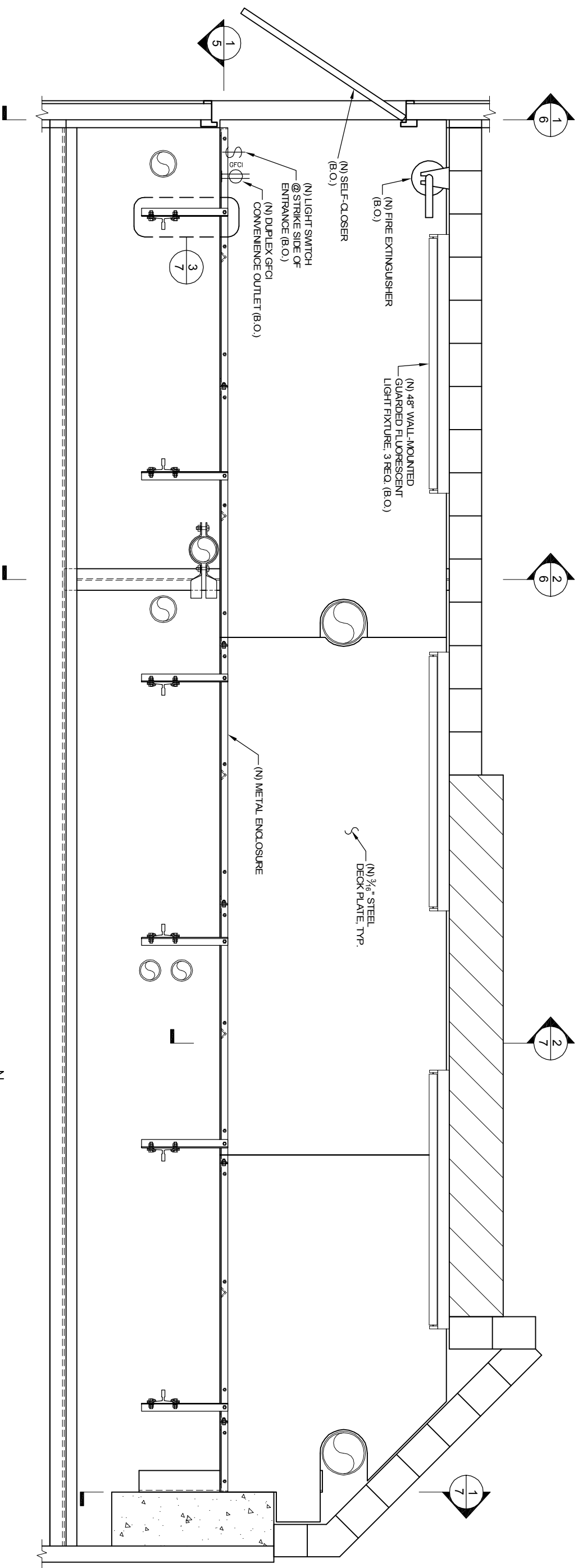
BLDG. MGMT: The Swig Company

SCOPE: 2nd Landing Counterweight Access Catwalk

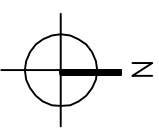
DWG.: CATWALK DECK PLATE PLAN & ELEVATION VIEWS

SCALE: AS NOTED STATE NO.: 20579


REV: -
DWG.#: 3
SHEET 3 OF 7

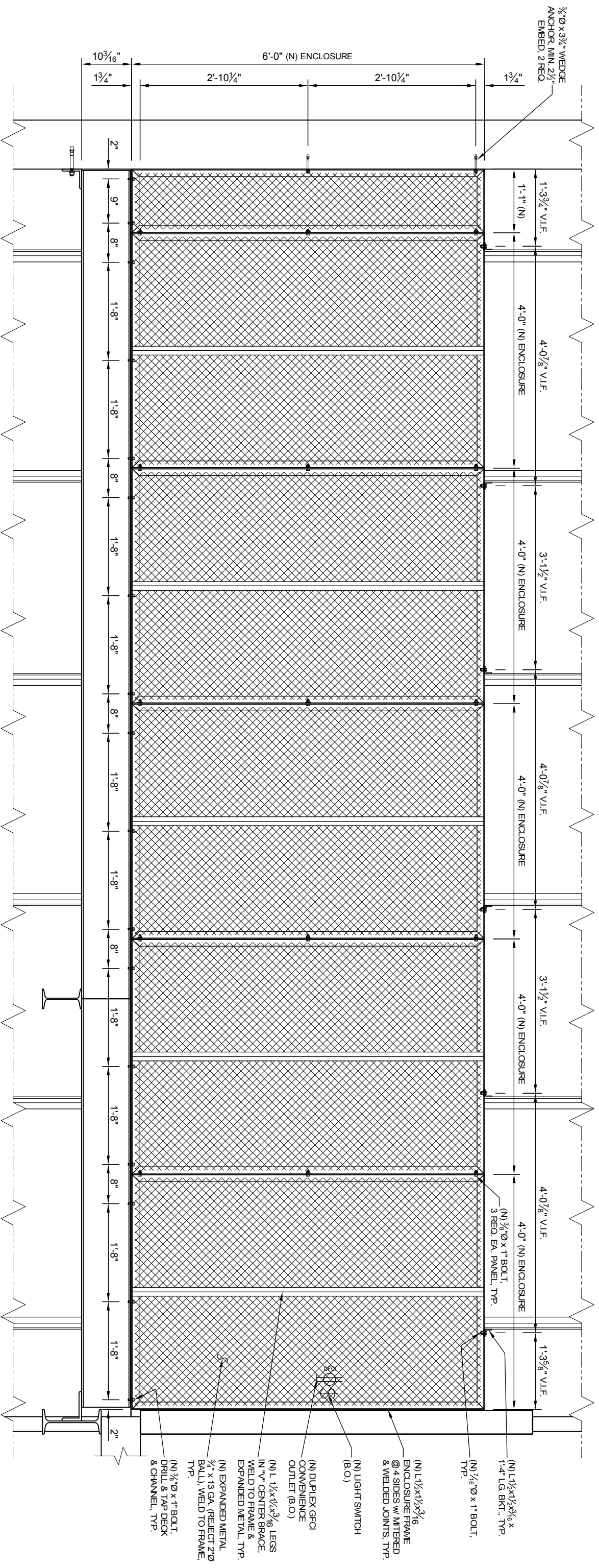


1 CATWALK FINISH PLAN VIEW
SCALE: 5/8"=1'-0"



FINAL
FOR FABRICATION
& CONSTRUCTION

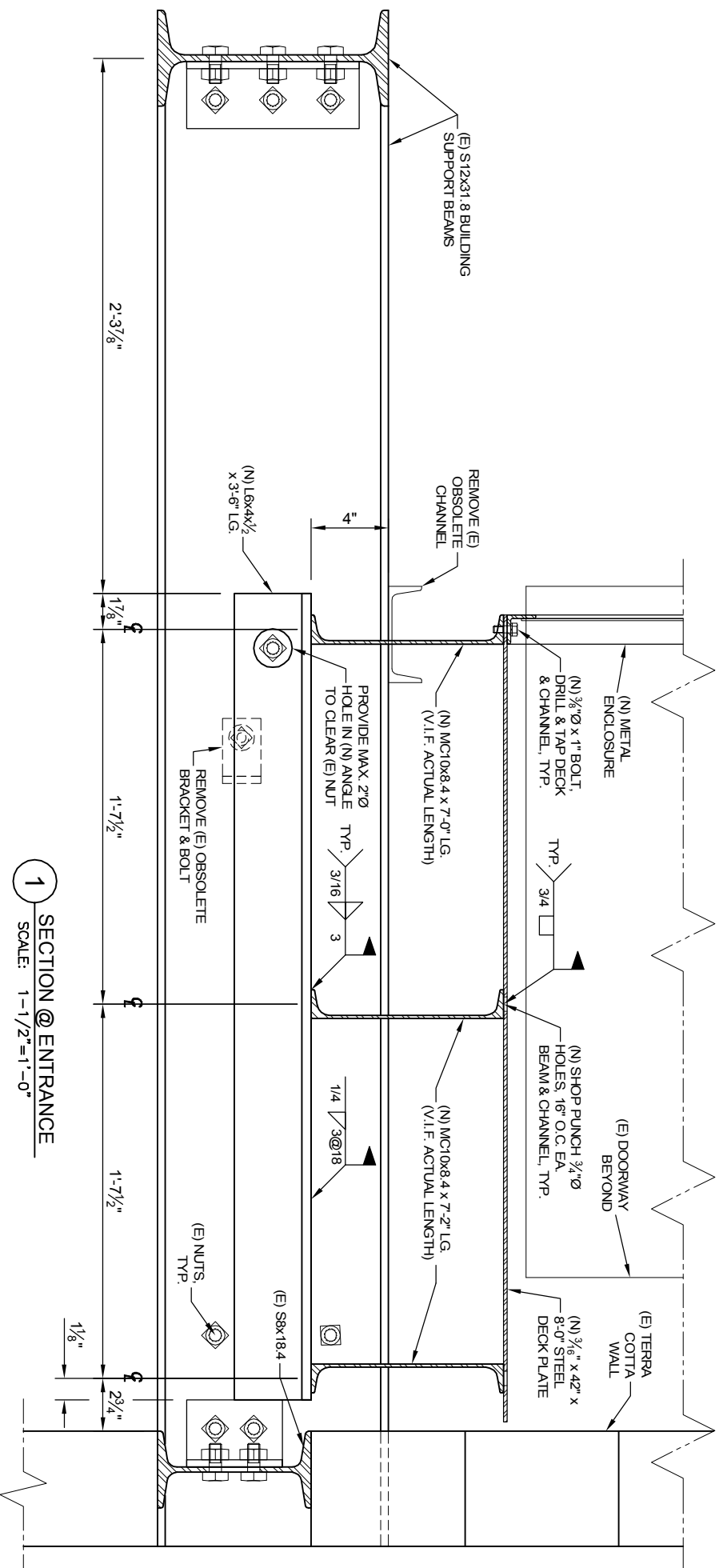
<p>STRUCTURAL STAMP</p> <p>EDDINGTON ENGINEERING</p> <p>REGISTERED PROFESSIONAL ENGINEER STATE OF CALIFORNIA RONALD B. EDDINGTON #S3376 exp. 12/05</p>		<p>DRAWN BY: R. BLASKA</p> <p>FRM: RCB CONSULTING (415) 771-4180</p> <p>DRAW DATE: 10/23/03</p> <p>DIMENSIONS: FEET & INCHES</p>	<p>REV</p> <p>DESCRIPTION:</p> <p>DATE:</p> <p>BY:</p>
<p>KONE Inc. 15021 Wicks Blvd. San Leandro, CA 94577 Tel 510-351-5141</p> 		<p>PROJECT: The Mills Building 220 Montgomery Street San Francisco, CA 94108</p> <p>BLDG. MGMT: The Swig Company</p> <p>SCOPE: 2nd Landing Counterweight Access Catwalk</p> <p>DWG.: CATWALK FINISH PLAN VIEW</p> <p>SCALE: AS NOTED STATE NO.: 20579</p>	
<p>1116 SINGINGWOOD ROAD SACRAMENTO, CALIFORNIA 95864 (916) 359-5300 FAX (916) 359-5301</p>		<p>REV</p> <p>DWG #</p> <p>4</p>	<p>SHEET 4 OF 7</p>



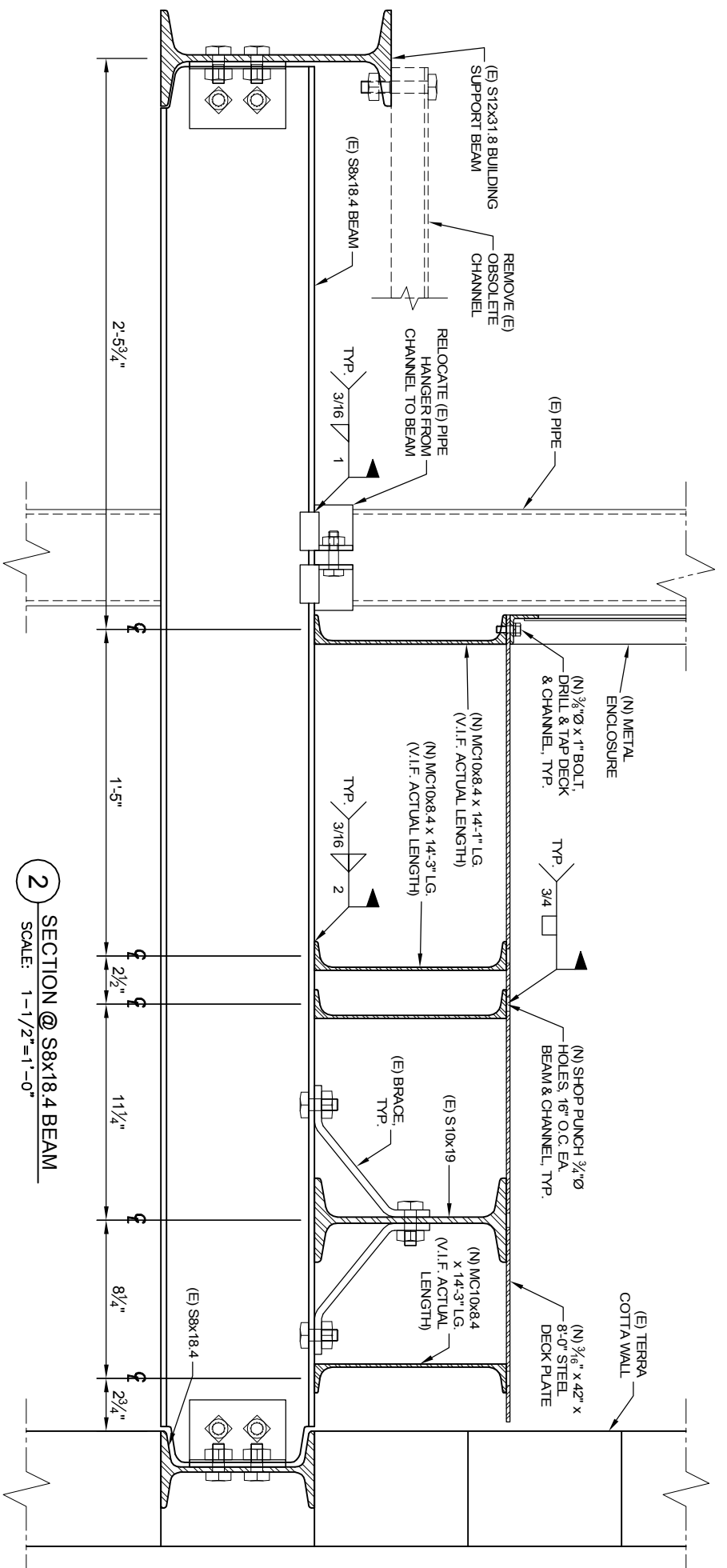
1 CATWALK ENCLOSURE ELEVATION
SCALE: 5/8"=1'-0"

FINAL
FOR FABRICATION
& CONSTRUCTION

STRUCTURAL STAMP EDDINGTON ENGINEERING			
DRAWN BY: R. BLASKA FRM: RCB CONSULTING (415) 771-4180 DRAW DATE: 10/23/03 DIMENSIONS: FEET & INCHES	REV: . DESCRIPTION: . DATE: . BY: .	KONE Inc. 15021 Wicks Blvd. San Leandro, CA 94577 Tel 510-351-5141	
PROJECT: The Mills Building 220 Montgomery Street San Francisco, CA 94108		KONE	
BLDG. MGMT: The Swig Company		PROJECT: 2nd Landing Counterweight Access Catwalk	
SCOPE: CATWALK METAL ENCLOSURE ELEVATION VIEW		REV: 5	DWG #: 5
SCALE: AS NOTED		STATE NO.: 20579	SHEET 5 OF 7



1 SECTION @ ENTRANCE
SCALE: 1-1/2"=1'-0"



2 SECTION @ S8x18.4 BEAM
SCALE: 1-1/2"=1'-0"

FINAL
FOR FABRICATION
& CONSTRUCTION

STRUCTURAL STAMP

EDDINGTON
ENGINEERING



1116 SINGINGWOOD ROAD
SACRAMENTO, CALIFORNIA 95864
(916) 359-5300 FAX (916) 359-5301

REV	DESCRIPTION:	DATE:	BY:

KONE Inc.
15021 Wicks Blvd.
San Leandro, CA 94577
Tel 510-351-5141

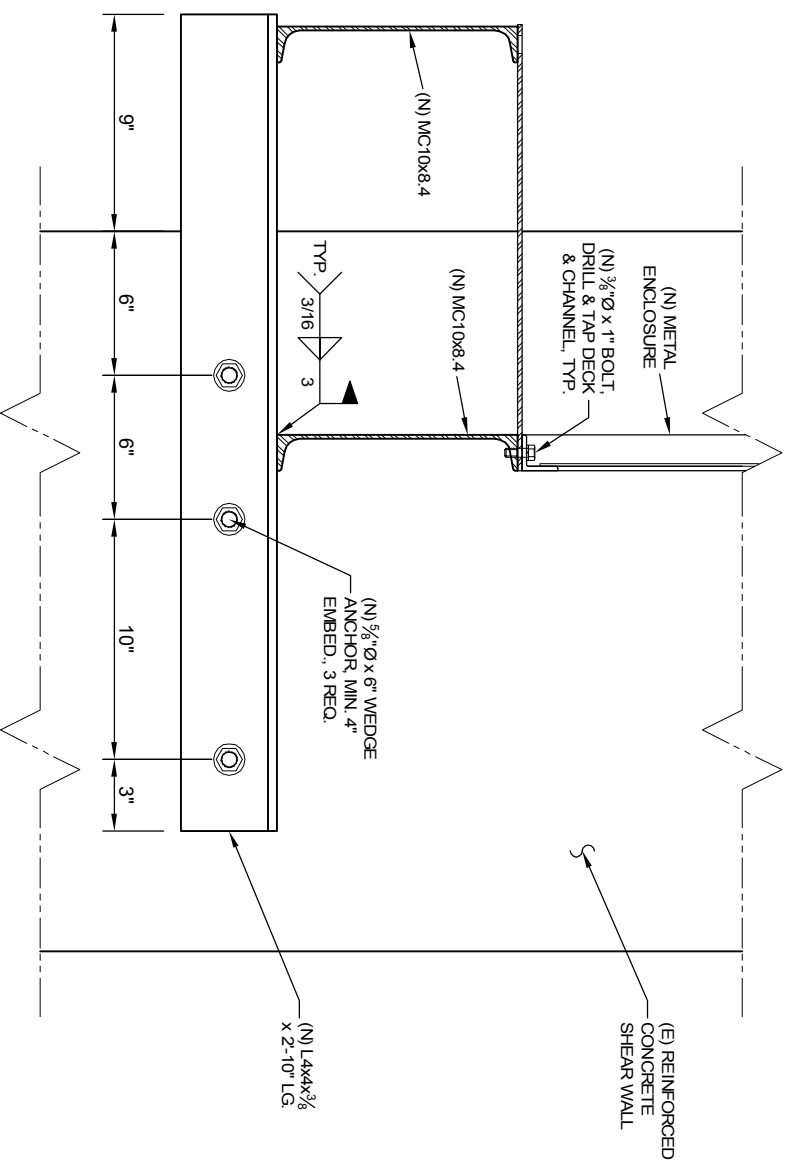


PROJECT: The Mills Building
220 Montgomery Street
San Francisco, CA 94108

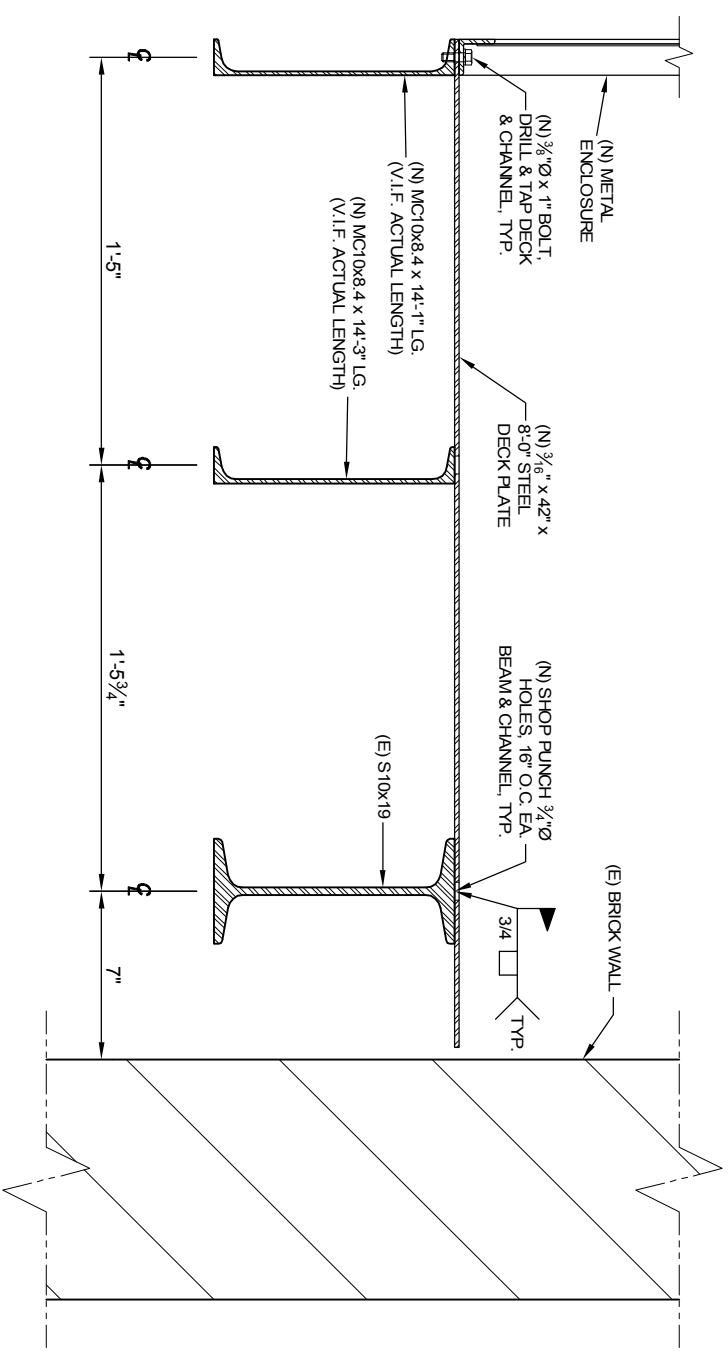
BLDG. MGMT: The Swig Company

SCOPE: 2nd Landing Counterweight Access Catwalk
DWG.: SECTIONS & DETAILS

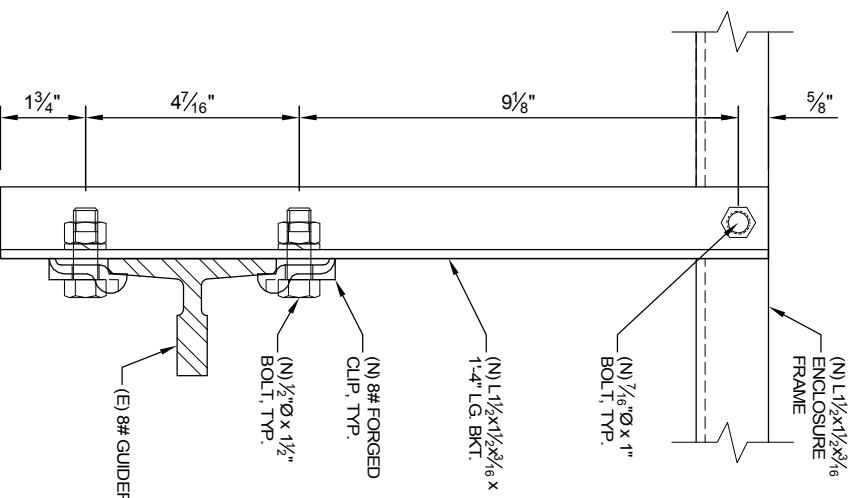
SCALE: AS NOTED STATE NO.: 20579 REV: 6 SHEET 6 OF 7



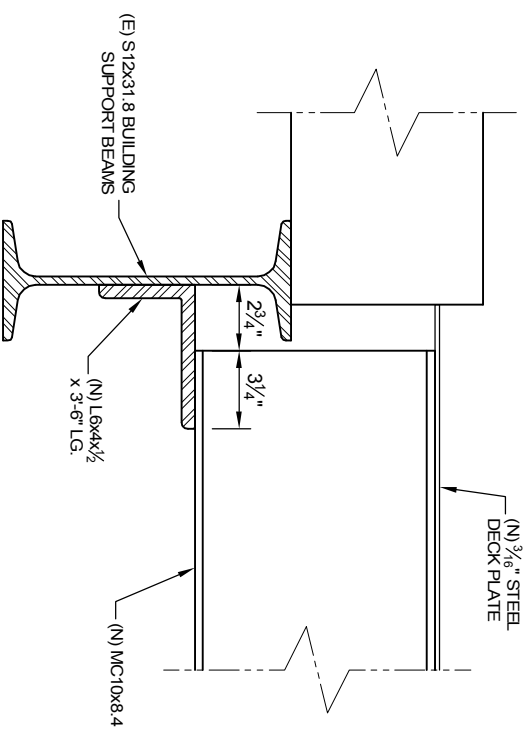
1 SECTION @ SHEAR WALL
SCALE: 1-1/2"=1'-0"



2 SECTION @ MIDSECTION
SCALE: 1-1/2"=1'-0"



3 RAIL ENCLOSURE BRACKET
SCALE: 3"=1'-0"
R.H. SHOWN, L.H. MIRROR IMAGE



4 ATTACHMENT DETAIL
SCALE: 1-1/2"=1'-0"

FINAL
FOR FABRICATION
& CONSTRUCTION

STRUCTURAL STAMP

EDDINGTON
ENGINEERING



1116 SINGINGWOOD ROAD
SACRAMENTO, CALIFORNIA 95864
(916) 359-5300 FAX (916) 359-5301

DRAWN BY:	REV	DESCRIPTION:	DATE:
R. BLASKA			
RCB CONSULTING			
(415) 771-4180			
DRAW DATE:			
10/23/03			
DIMENSIONS:	FEET & INCHES		

KONE Inc.
15021 Wicks Blvd.
San Leandro, CA 94577
Tel 510-351-5141



PROJECT: The Mills Building
220 Montgomery Street
San Francisco, CA 94108

BLDG. MGMT: The Swig Company

SCOPE: 2nd Landing Counterweight Access Catwalk
DWG.: SECTIONS & DETAILS

SCALE: AS NOTED STATE NO.: 20579 REV: 7 SHEET 7 OF 7